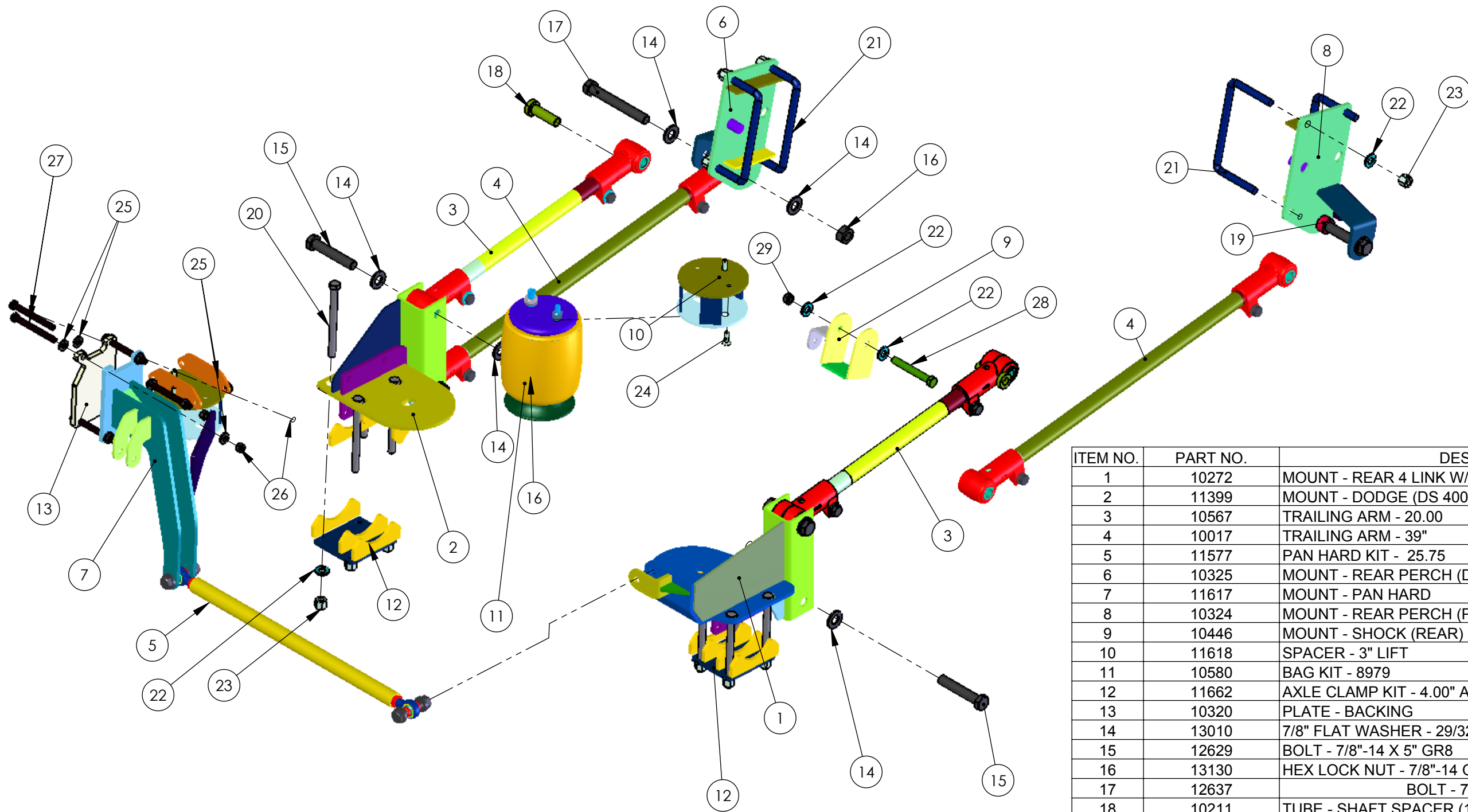


# INSTALLATION - DODGE 10" RIDE

## DODGE-R4L-10-400-LB-D-AUTO-44-03\*\*



ITEM NO.	PART NO.	DESCRIPTION	QTY.
1	10272	MOUNT - REAR 4 LINK W/AL (R)	1
2	11399	MOUNT - DODGE (DS 400)	1
3	10567	TRAILING ARM - 20.00	2
4	10017	TRAILING ARM - 39"	2
5	11577	PAN HARD KIT - 25.75	1
6	10325	MOUNT - REAR PERCH (DS)	1
7	11617	MOUNT - PAN HARD	1
8	10324	MOUNT - REAR PERCH (PS)	1
9	10446	MOUNT - SHOCK (REAR)	1
10	11618	SPACER - 3" LIFT	1
11	10580	BAG KIT - 8979	2
12	11662	AXLE CLAMP KIT - 4.00" AXLE NO SHOCK	1
13	10320	PLATE - BACKING	1
14	13010	7/8" FLAT WASHER - 29/32" ID X 1 3/4" OD X 1/4" THK	12
15	12629	BOLT - 7/8"-14 X 5" GR8	4
16	13130	HEX LOCK NUT - 7/8"-14 GR8	6
17	12637	BOLT - 7/8"-14 X 7" GR8	2
18	10211	TUBE - SHAFT SPACER (18mm)	2
19	10178	TUBE - SPACER	2
20	12445	SCREW-HCS-.63-18X7.50-GR8-YZ	8
21	13804	BOLT-U-.63-18X5.00-9.00-GR.8-CZ	4
22	13006	5/8" FLAT WASHER - 11/16" ID X 1 5/16" OD X 3/16" THK	15
23	13179	NUT - HEX EXT. -.63-18-GR8-PLN	13
24	13501	SCREW-SHCS-M8 X 1.25 X 30-10.9-PLN	4
25	13004	1/2" FLAT WASHER - 17/32" ID X 1 1/16" OD X 7/64" THK	12
26	13124	HEX LOCK NUT - 1/2"-20 GR8	6
27	12037	BOLT - 1/2"-20 X 5" GR8	6
28	12433	SCREW-HCS-.63-18X4.75-GR8-YZ	1
29	13106	HEX NUT - 5/8"-11 GR8	1